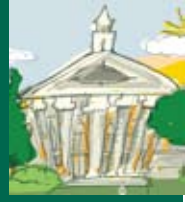


Meet Me at the UCA

COLORADO STATE UNIVERSITY SCHOOL OF THE ARTS
SPRING 2009 PERFORMANCES AND EXHIBITIONS



Much Ado About Nothing by William Shakespeare

Directed by Eric Prince

February 4, 5, 6, 7, 8, 8:00 p.m., and Sunday, February 8, 2:00 p.m.

University Theatre, University Center for the Arts

1400 Remington St., Fort Collins, Colorado

\$7/CSU students, \$7/youth (ages 6 - 17), \$14/seniors, \$16/public

Sigh no more ladies, sigh no more. Men were deceivers ever, One foot in sea, and one on shore, To one thing constant never...

Meet Pheobe Piper - Beatrice

Phoebe Piper is a Theatre/Interior Design major and is a Junior at CSU. She has been in the 2007 *One Act Festival*, *Caffeine: Why We Can't Stop*, and the 2008 *One Act Festival*, and performed the lead role of Grusha in last fall's production of Brecht's *Caucasian Chalk Circle*. Piper looks forward to doing more shows at CSU and thanks her family and friends for their support.

What is your favorite part about being in "Much Ado About Nothing"?

It's Shakespeare! I have never been in a Shakespeare production and the best part was discovering how much fun it could be. It was great exploring the text and characters.

How have you applied your advanced acting class in Shakespeare into developing your character?

We were given a lot of resources (such as the course textbook) that have helped tremendously in developing character. The class really gave us practice in performing Shakespeare and confidence in ourselves. I was very intimidated by the thought of Shakespeare before I took the class. Now I feel like I can pick up any script and perform a character with confidence and that I think is the most important key in finding your own character.

How does transporting the setting from 1500's Italy to 1940's California affect your interpretation and performance?

The time period change does affect my performance and interpretation. It has been challenging figuring out how to portray the time period and still stay true to Shakespeare's meaning and text. It's difficult to think I'm in the 1940's speaking in Shakespeare language. I think with the help of costumes and props and in our body language the time period will come out.

CLICK HERE FOR MORE DETAILS ABOUT THE PRODUCTION

[Buy Tickets](#)

[See the Full Event Calendar](#)

[Venues & Parking Information](#)

[Visit the School of the Arts Web Site](#)



Special Thanks to Our Green Sponsor

Best Western University Inn

Official Hotel Sponsor of the 08-09 Season

Colorado State University

SCHOOL OF THE ARTS

www.CSUSchooloftheArts.com ~ events@CSUSchooloftheArts.com